

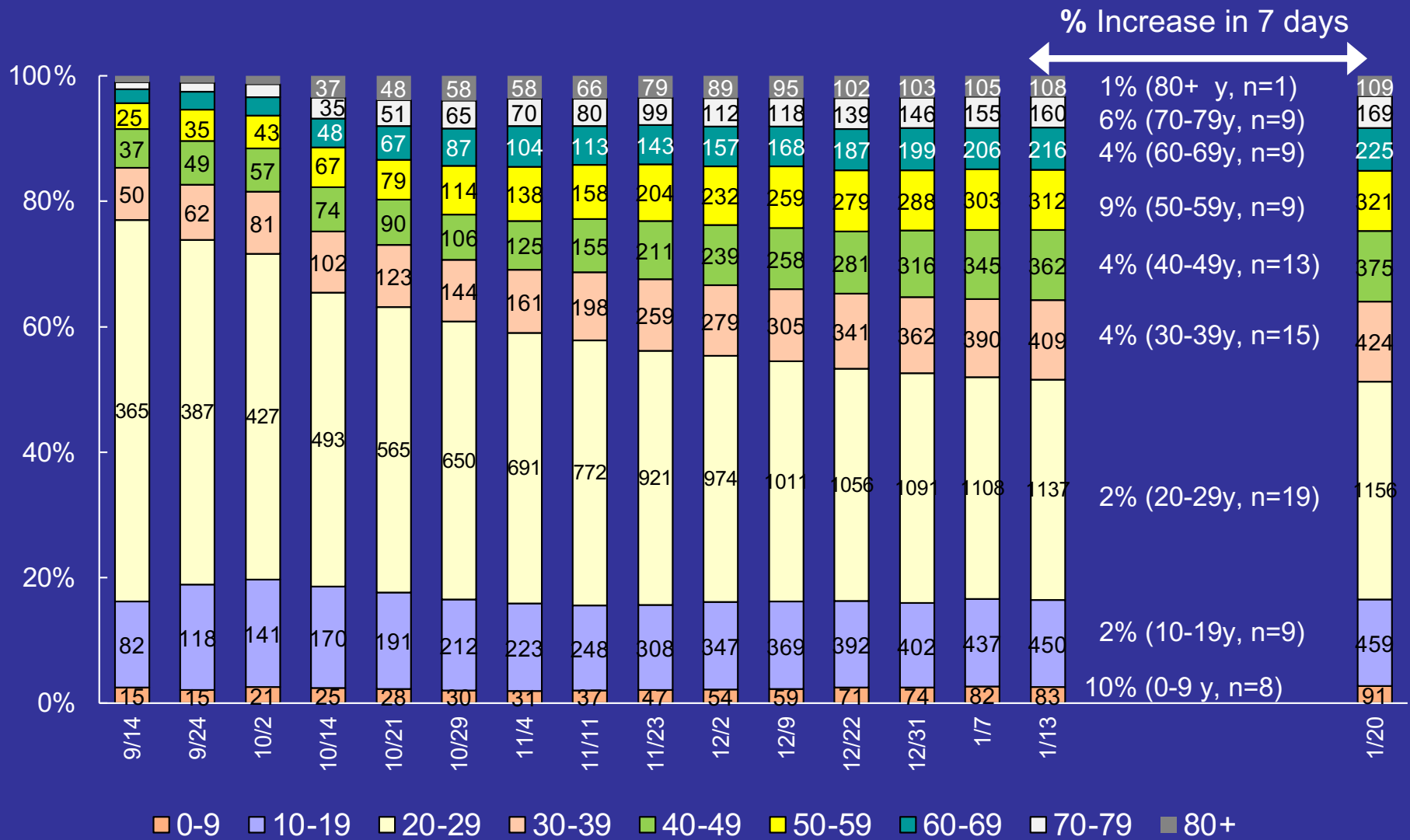
COVID-19 Situation

Brookings County

- Cases by Age & Date
- Cumulative Percent of Population Testing Positive by Age & Month
- Average Number of New Cases per Day Over the Last 7 Days per 100K Population (daily & Sunday only)
- Brookings County Mobility Data

South Dakota COVID-19 Situation

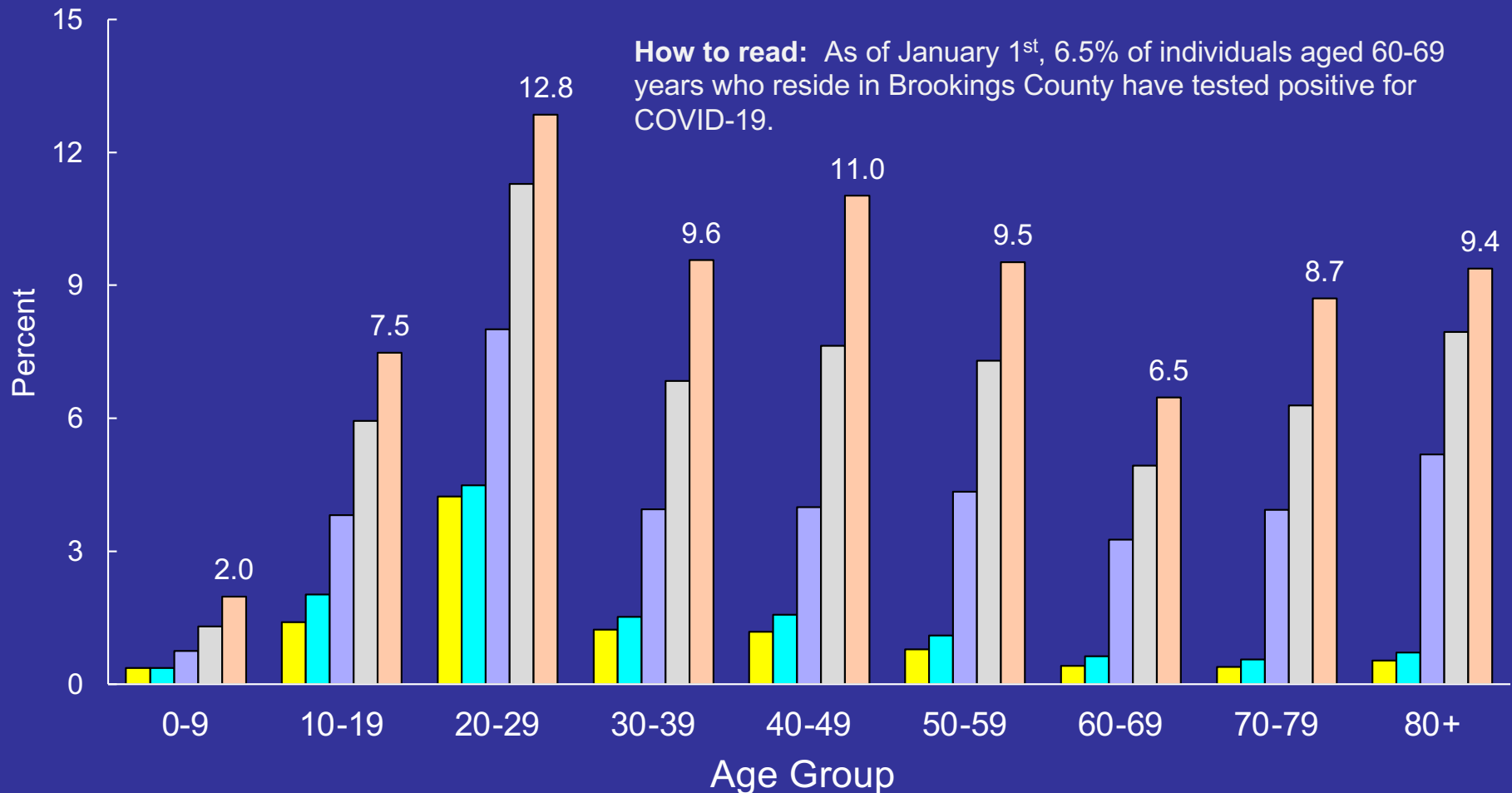
Percent & Number of Brookings County Cases Who Have Tested Positive by Age and Date



Brookings COVID-19 Situation

Cumulative Percent of Population within Each Age Group Testing Positive in Brookings County by Month

■ 14-Sep ■ 2-Oct ■ 4-Nov ■ 2-Dec ■ 7-Jan



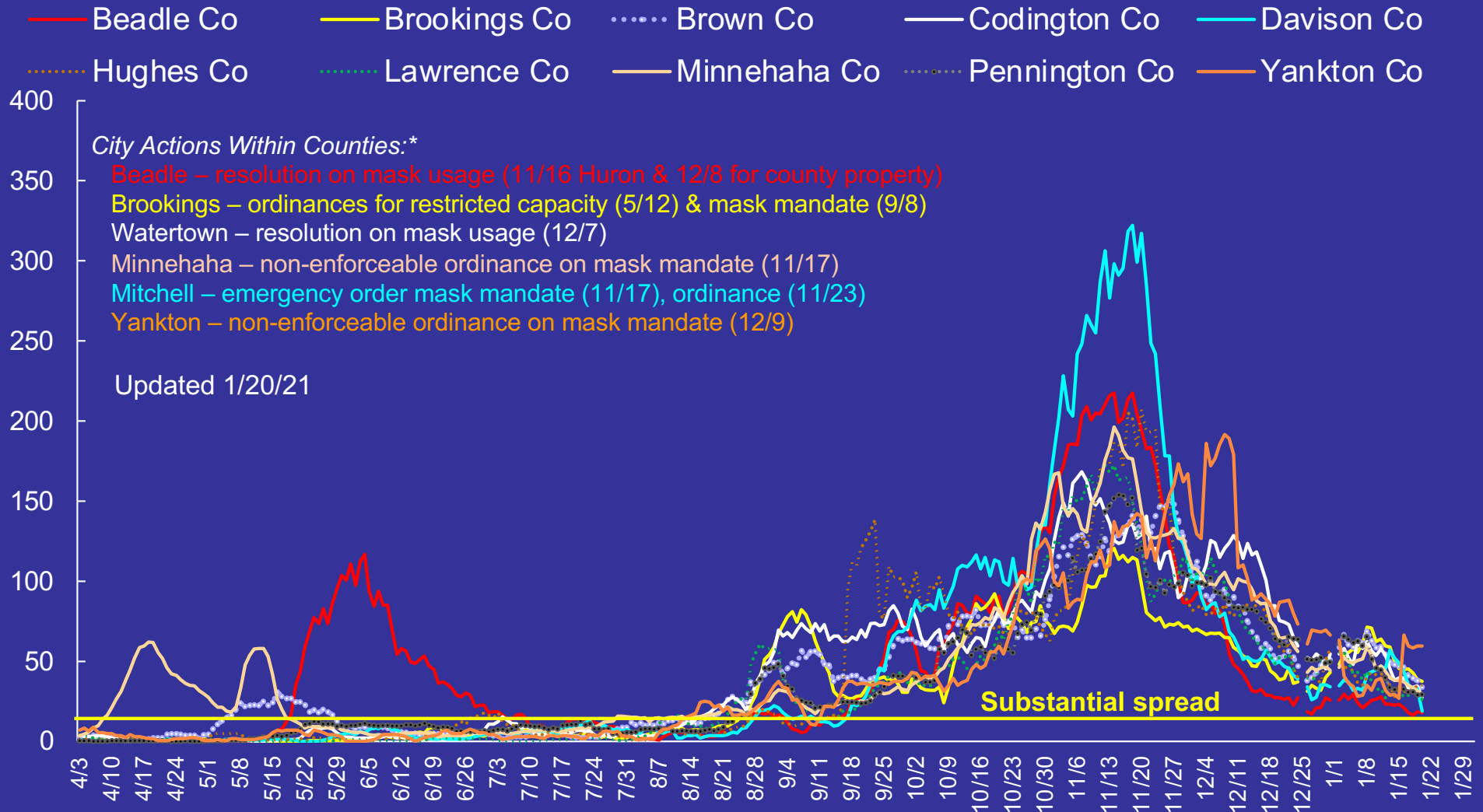
Overall, 8.9% of Brookings County residents have tested positive as of January 7th.

Case data as close to the first of the month as possible was used. Population estimates from 2019 Census.

Data Source: South Dakota Department of Health. Updated monthly.

Counties with Top 10 Most Populous Cities

Average Cases per Day Over the Last 7 Days per 100,000 Population

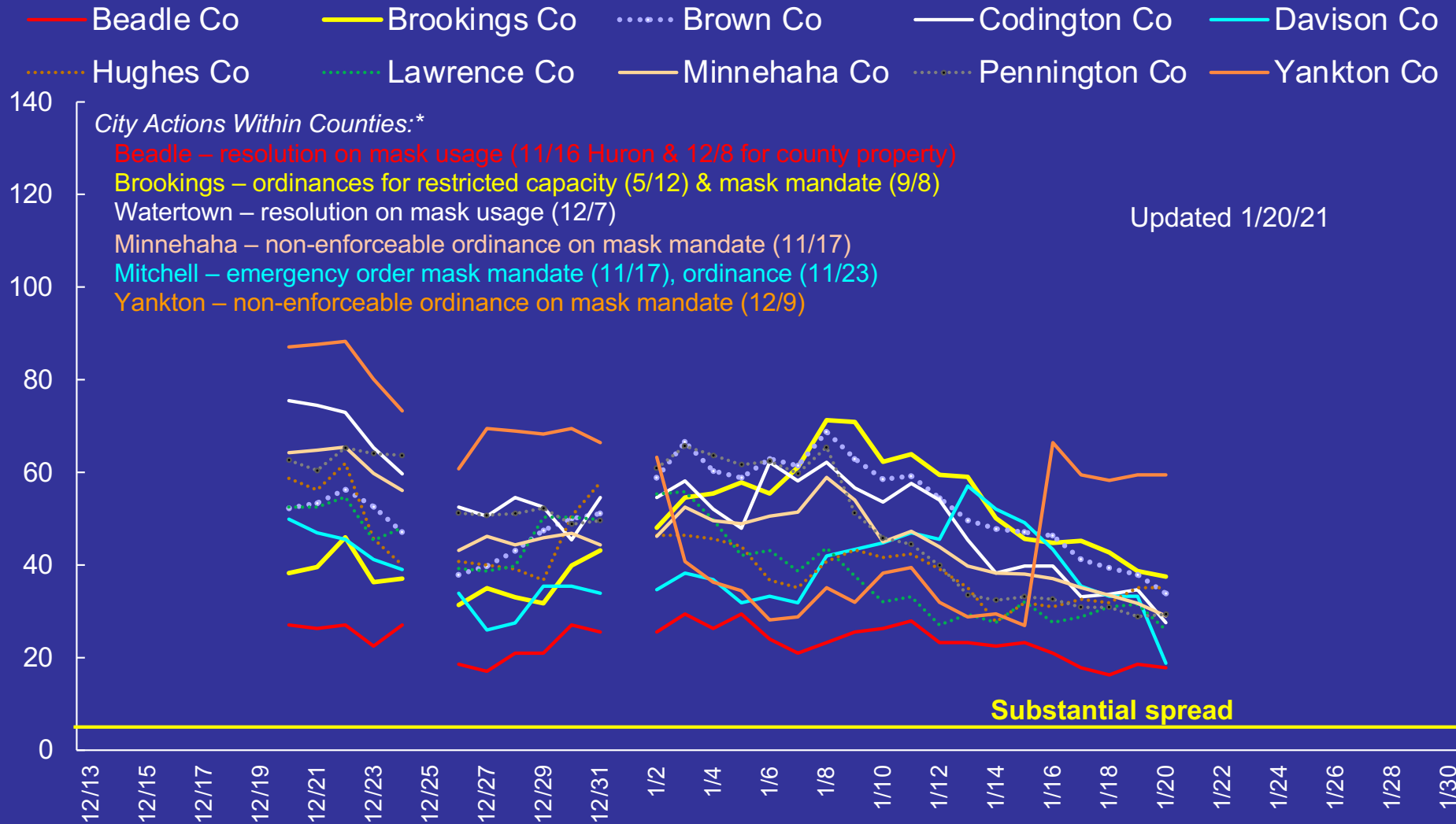


Spread based on new cases/week: substantial = 100+/100K population = 14+ new cases/day per 100K.
 Date is date posted to SDDOH dashboard. 2019 Census county population estimates used.

Data from <https://doh.sd.gov/COVID/Dashboard.aspx>

Counties with Top 10 Most Populous Cities

Average Cases per Day Over the Last 7 Days per 100,000 Population



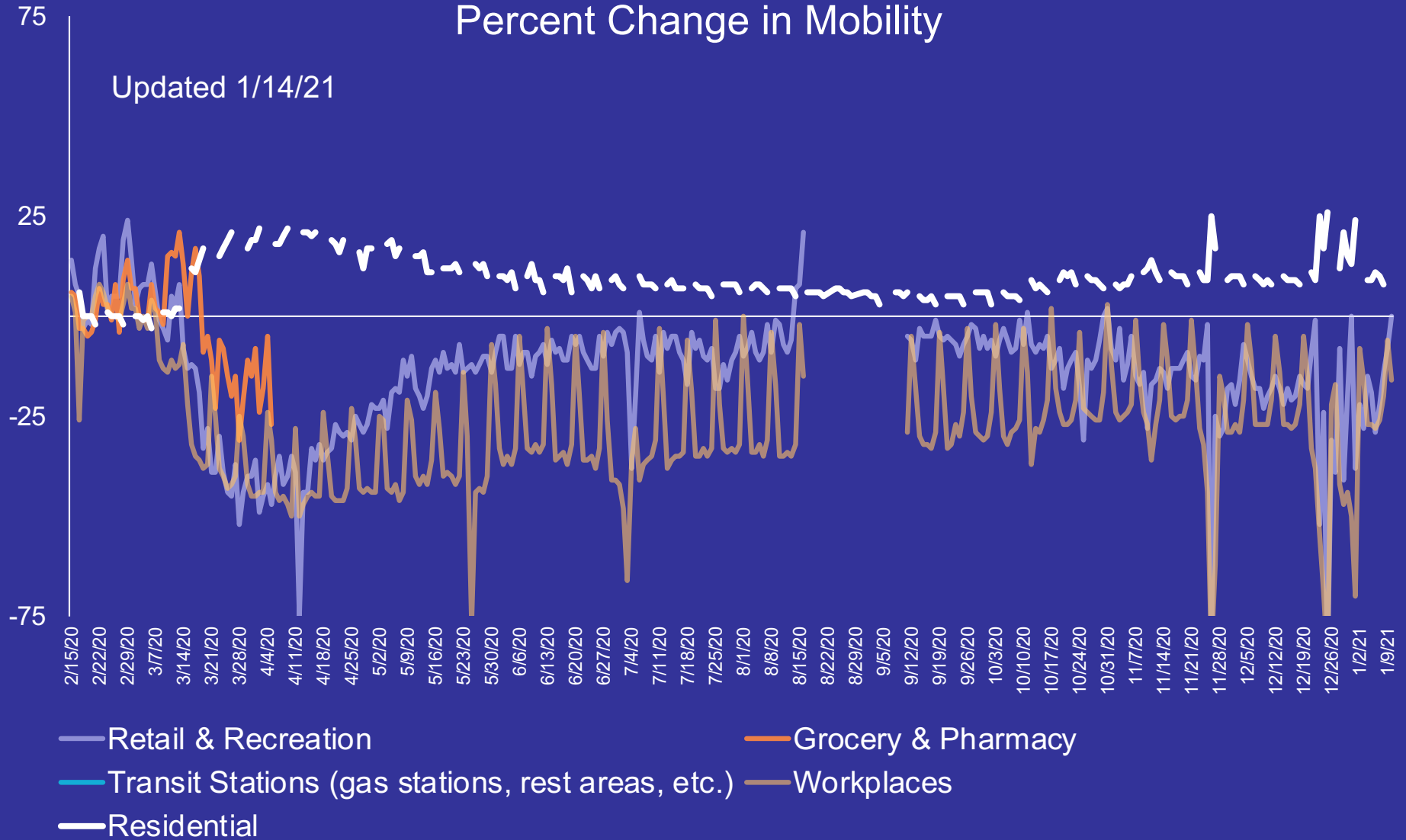
Spread based on new cases/week: substantial = 100+/100K population = 14+ new cases/day per 100K.
 Date is date posted to SDDOH dashboard. 2019 Census county population estimates used.

Data from <https://doh.sd.gov/COVID/Dashboard.aspx>

Brookings County Mobility Data via Google

Percent Change in Mobility

Updated 1/14/21



Baseline: normal value for day of week (1/3-2/6/20)

Residential shows a change in duration, other categories are change in total visitors. *Parks* not shown.

Data from *Google COVID-19 Community Mobility Reports* <https://www.google.com/covid19/mobility/>

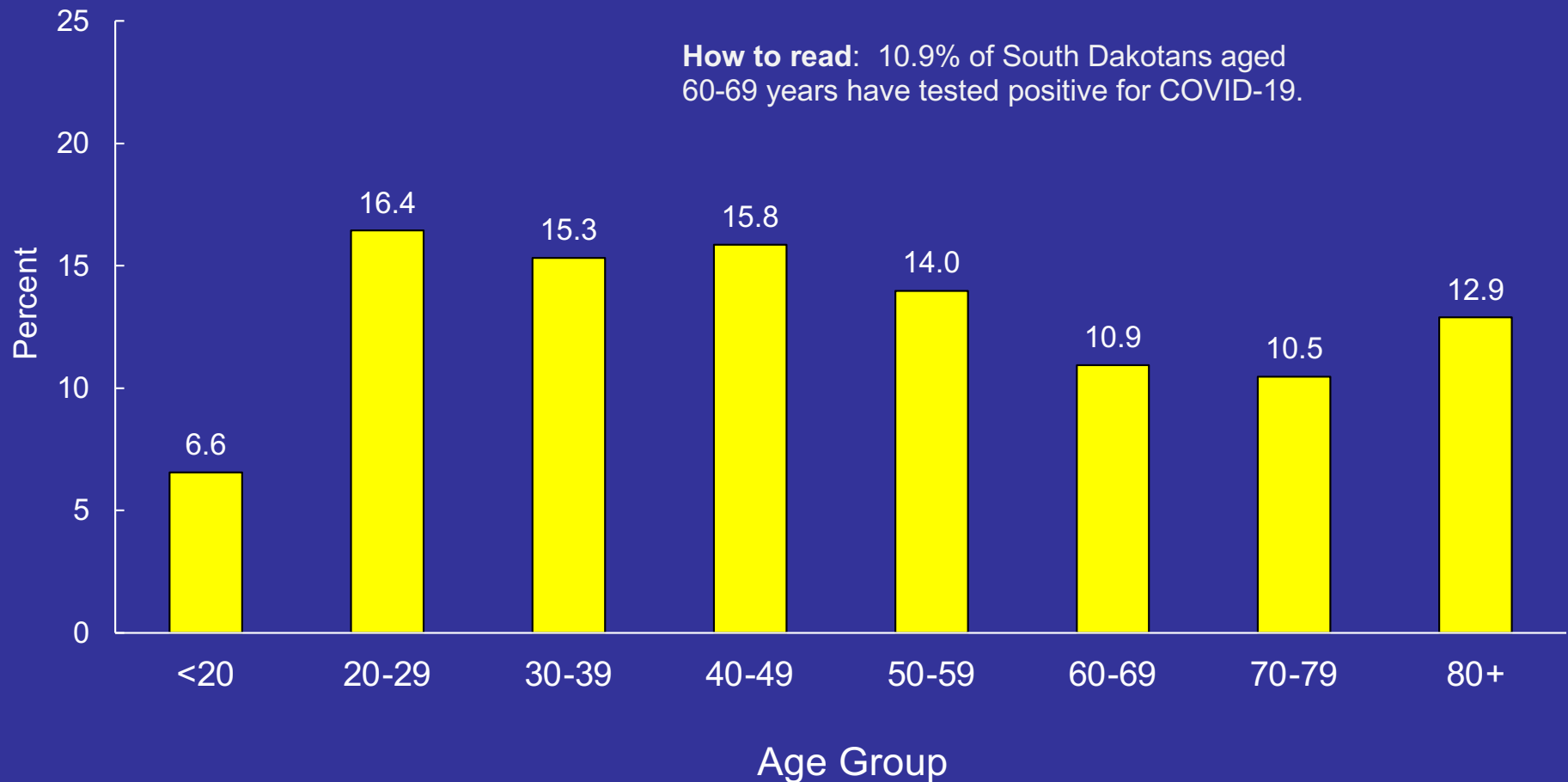
COVID-19 Situation

South Dakota

- Percent of Population Ever Testing Positive by Age
- Percent of Cases Hospitalized by Age
- Case Fatality Rates by Age
- Number of Active Cases at SDSU & USD
- Cumulative Number of Cases in K-12 & Higher Education
- South Dakota Death Data (2010-2020) – *3 slides*
- South Dakota Mobility Data

South Dakota COVID-19 Situation

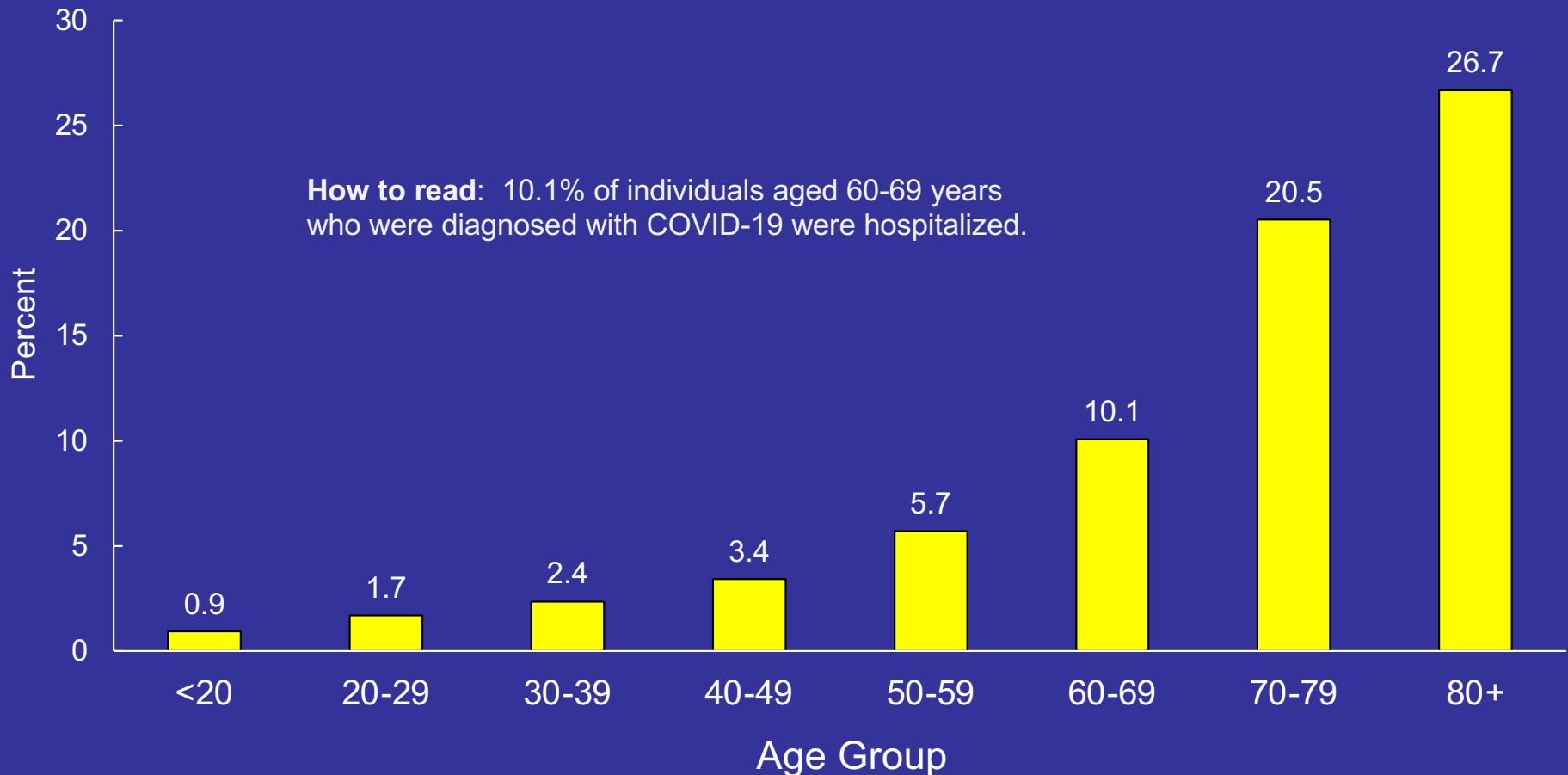
Percent of South Dakota Population Ever Testing Positive by Age as of January 20, 2021



Overall, 11.8% of South Dakota population has tested positive.

South Dakota COVID-19 Situation

Percent of Cases Ever Hospitalized by Age as of January 20, 2021

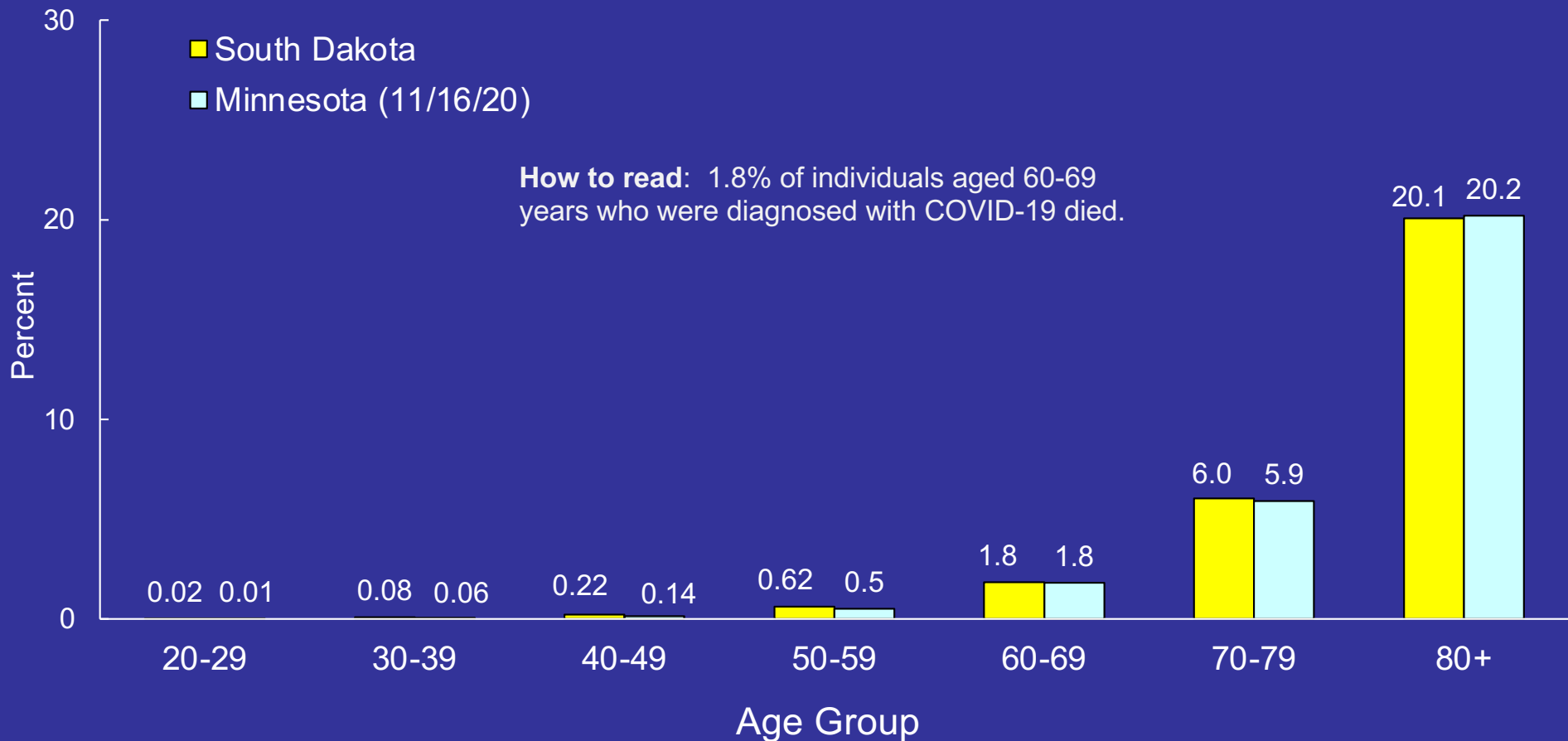


Overall, 5.7% of South Dakotans who tested positive have been hospitalized.
Calculated as (ever hospitalized/tested positive)*100 using South Dakota data.

South Dakota COVID-19 Situation

Case Fatality Rates by Age

South Dakota updated on January 20, 2021



Case fatality rate calculated as $\text{COVID deaths} / (\text{COVID deaths} + \text{recovered}) * 100$ (<https://doh.sd.gov/COVID/Dashboard.aspx>)
 Minnesota data: $\text{CFR} = (\text{deaths/cases}) * 100$ (<https://www.health.state.mn.us/diseases/coronavirus/stats/covidweekly46.pdf>)
 Data not given for ages <19 years.

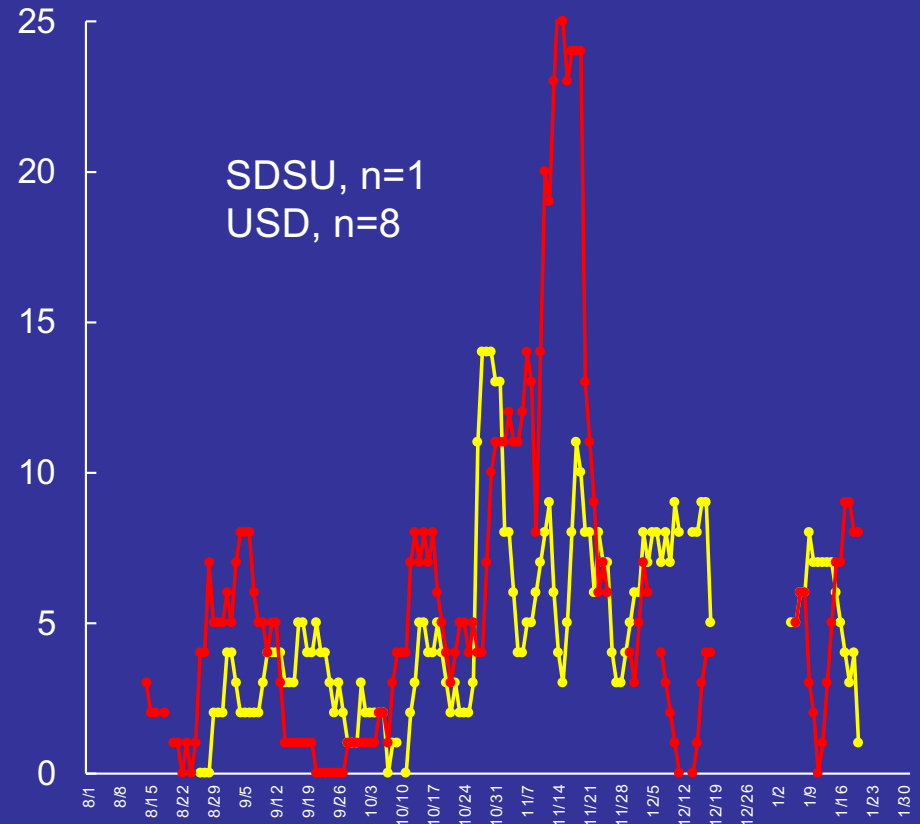
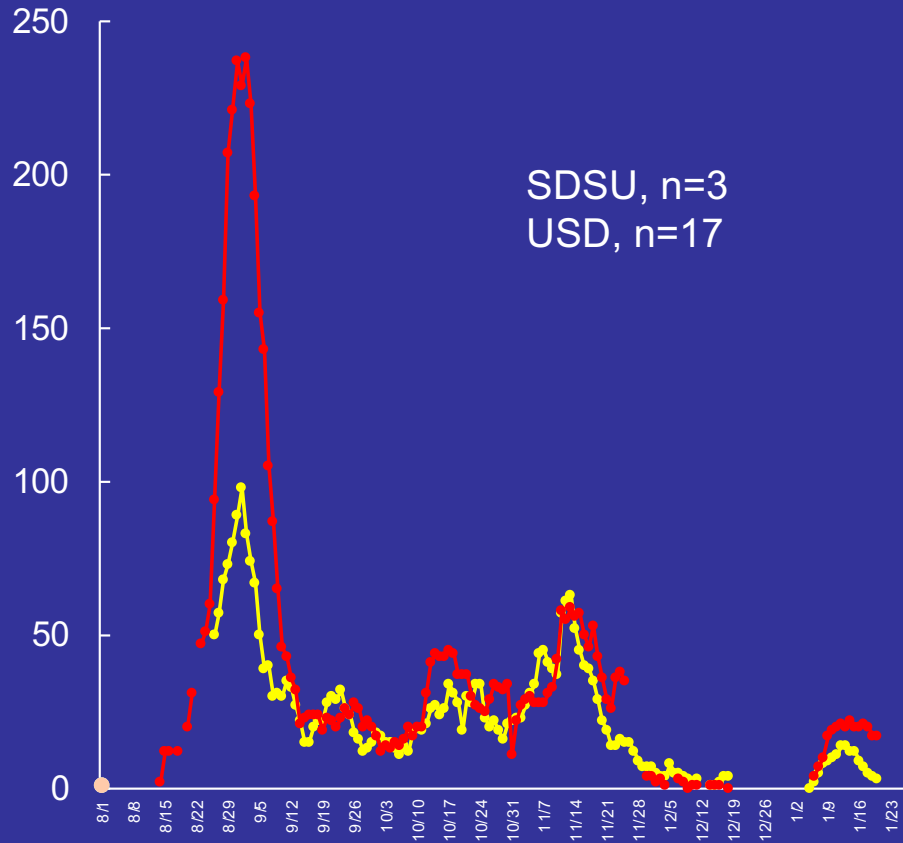
University Situation

Number of Active COVID-19 Cases

--- = SDSU --- = USD

Students

Employees



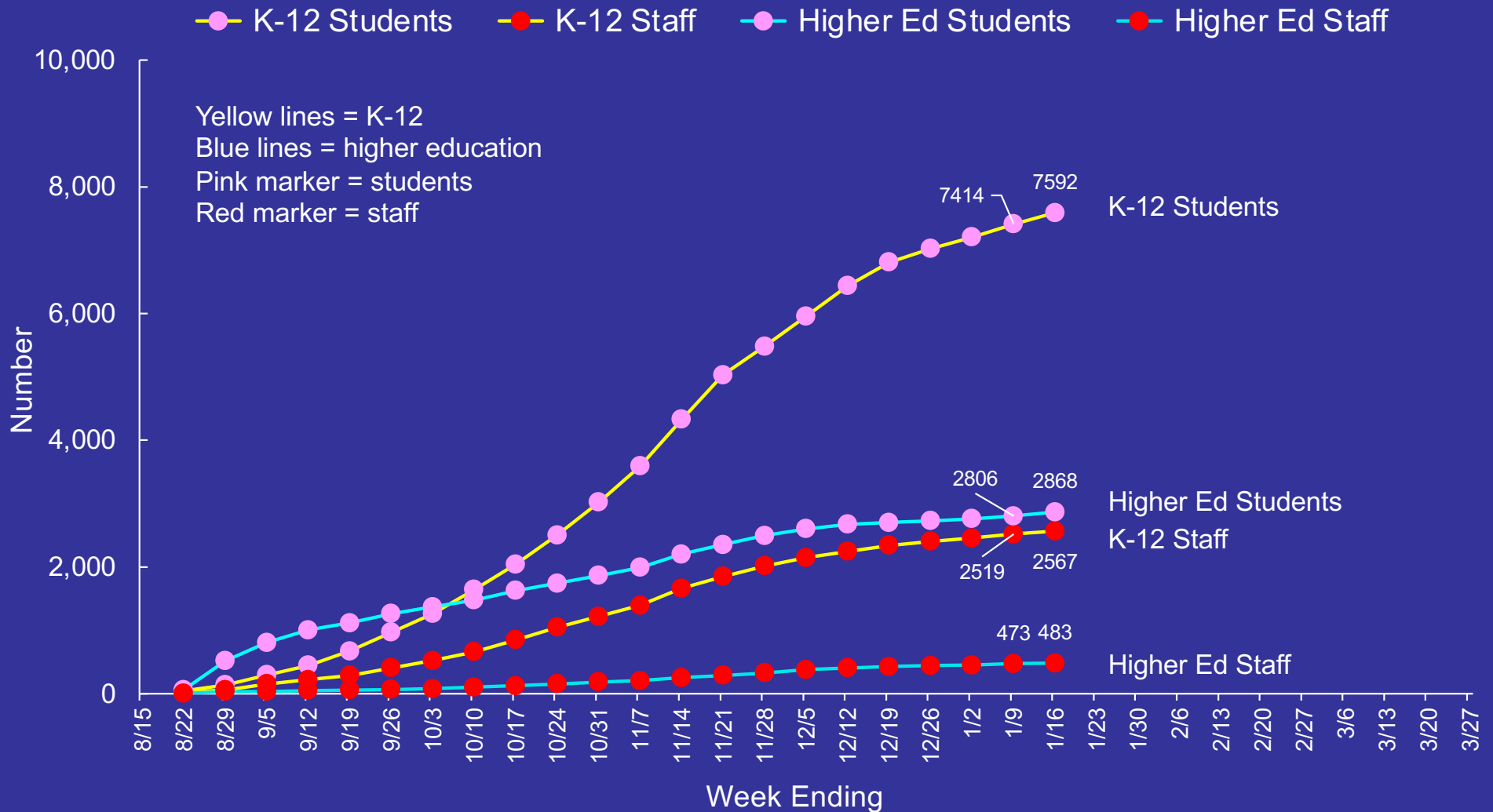
Updated on 1/20/21

Individuals are not necessarily residents of Brookings or Clay counties.

<https://www.sdstate.edu/covid-19/covid-19-dashboard>
<https://www.usd.edu/covid19/covid-19-dashboard>

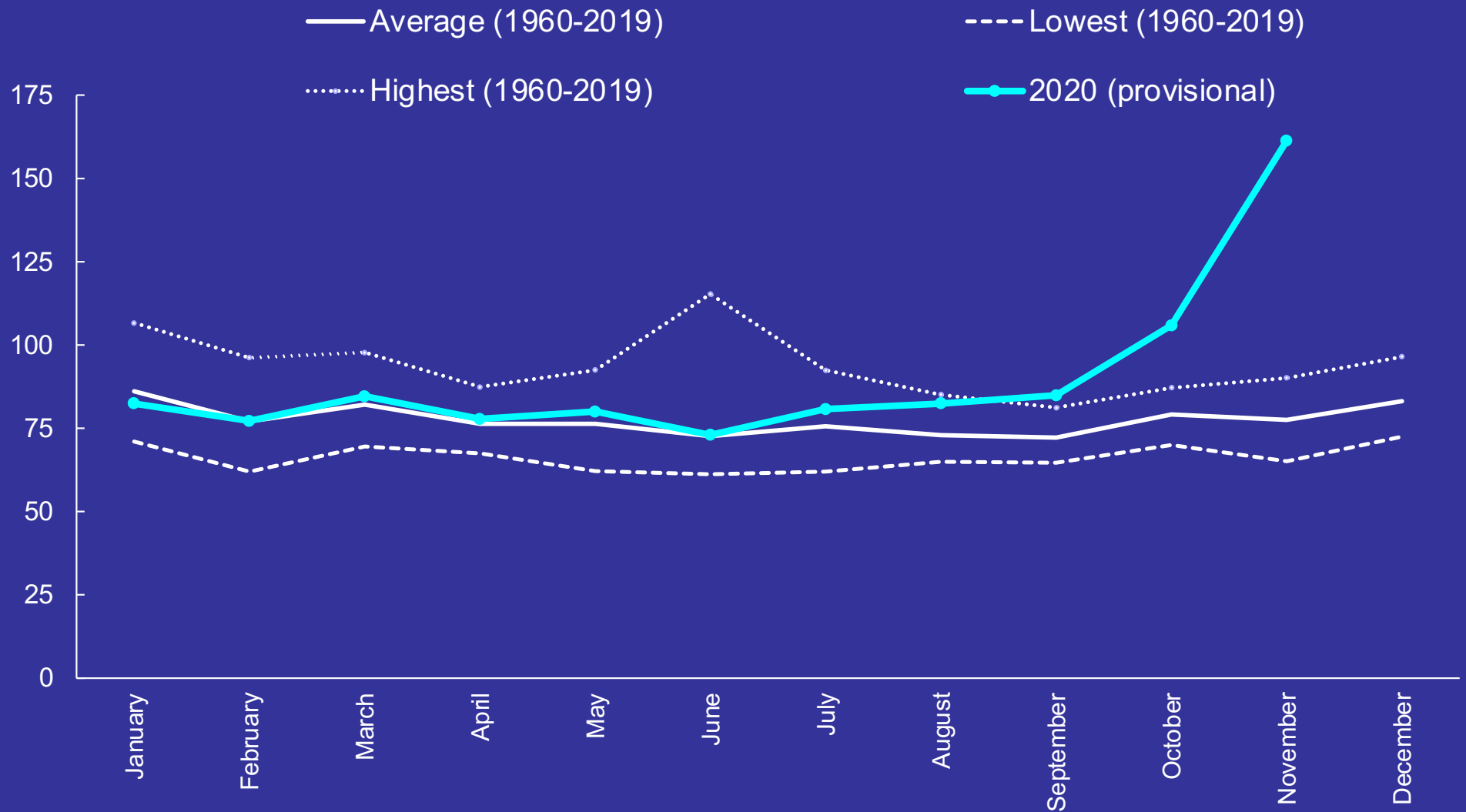
South Dakota School Situation

Cumulative Number of COVID-19 Cases



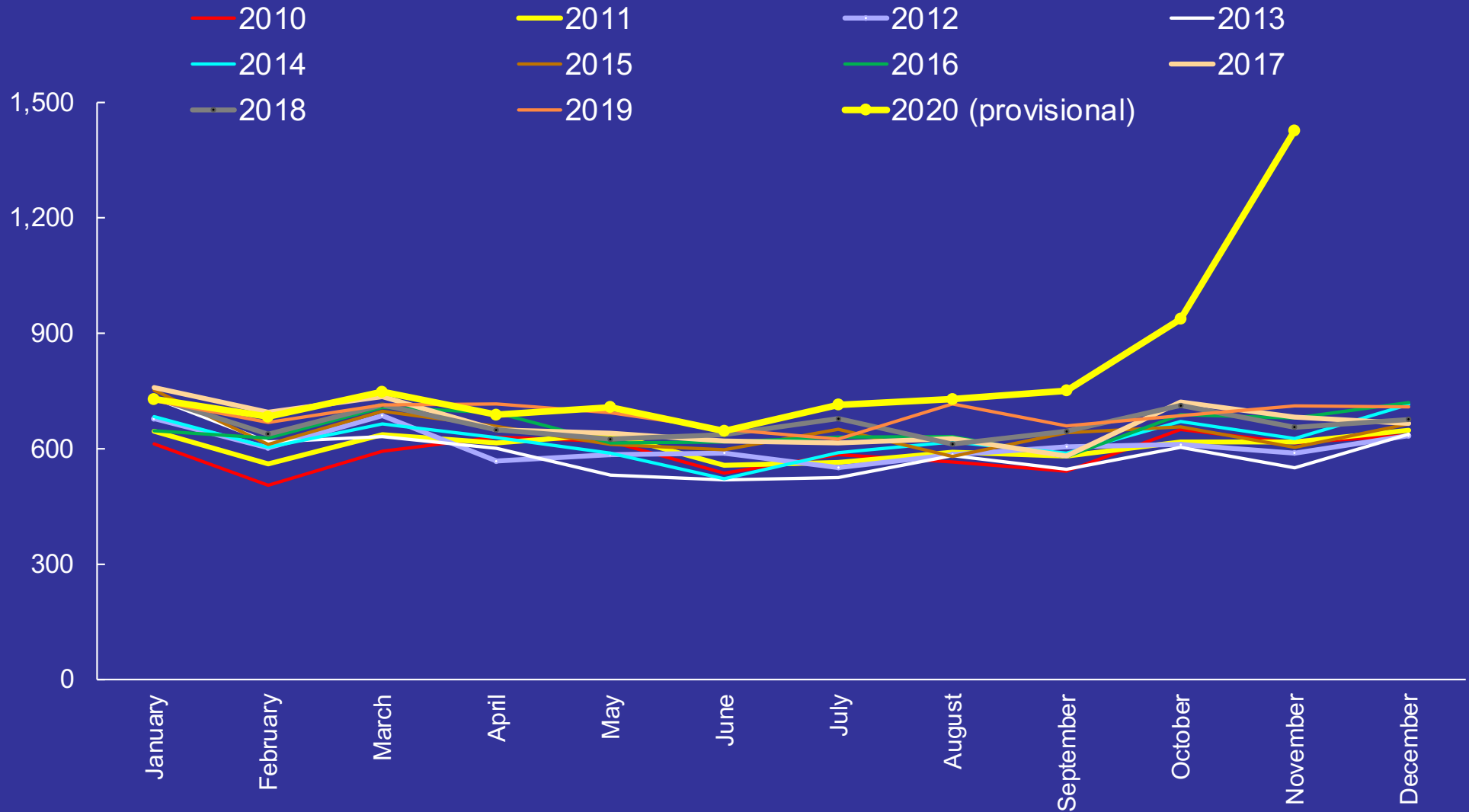
South Dakota Deaths

Deaths per 100,000 Population by Month with Average and Lowest and Highest Rates from 1960 to 2019



South Dakota Deaths

Number of Deaths by Year and Month

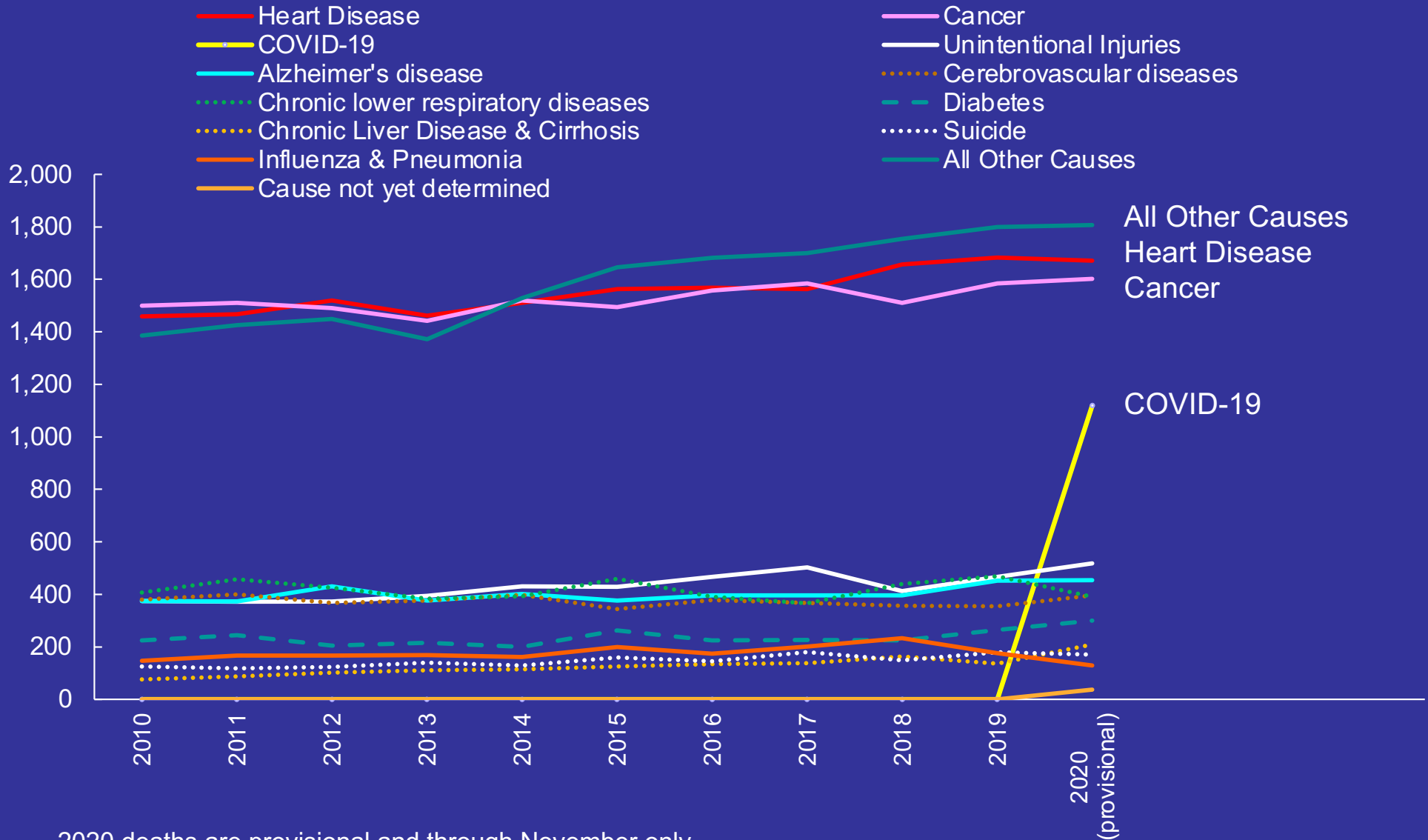


<https://doh.sd.gov/statistics/>

<https://doh.sd.gov/documents/statistics/Mortality-Report-2020.pdf>

South Dakota Deaths

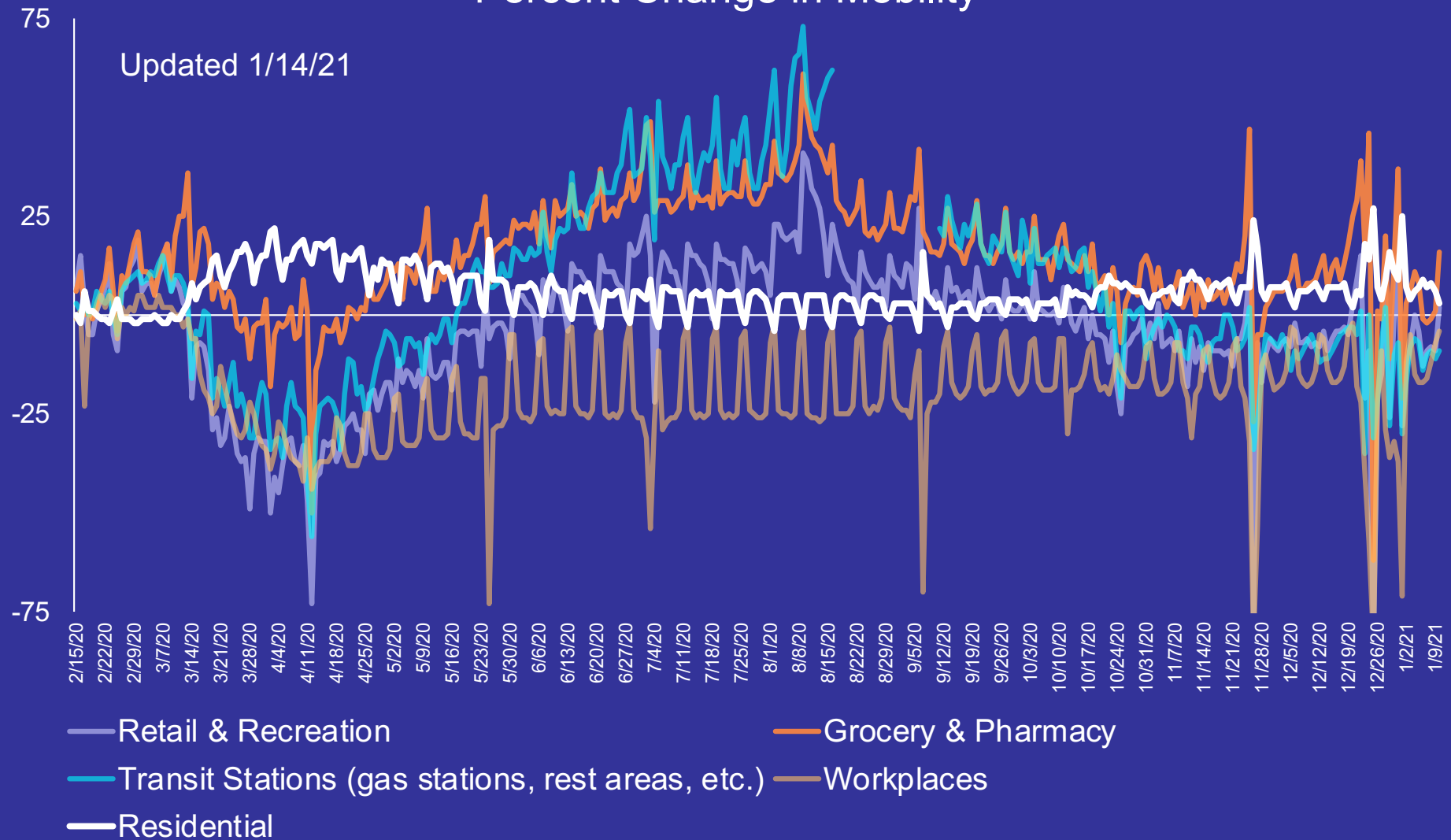
Number of Deaths by Cause and Year



2020 deaths are provisional and through November only

South Dakota Mobility Data via Google

Percent Change in Mobility



Baseline: normal value for day of week (1/3-2/6/20)

Residential shows a change in duration, other categories are change in total visitors. *Parks* not shown.

Data from Google COVID-19 Community Mobility Reports <https://www.google.com/covid19/mobility/>