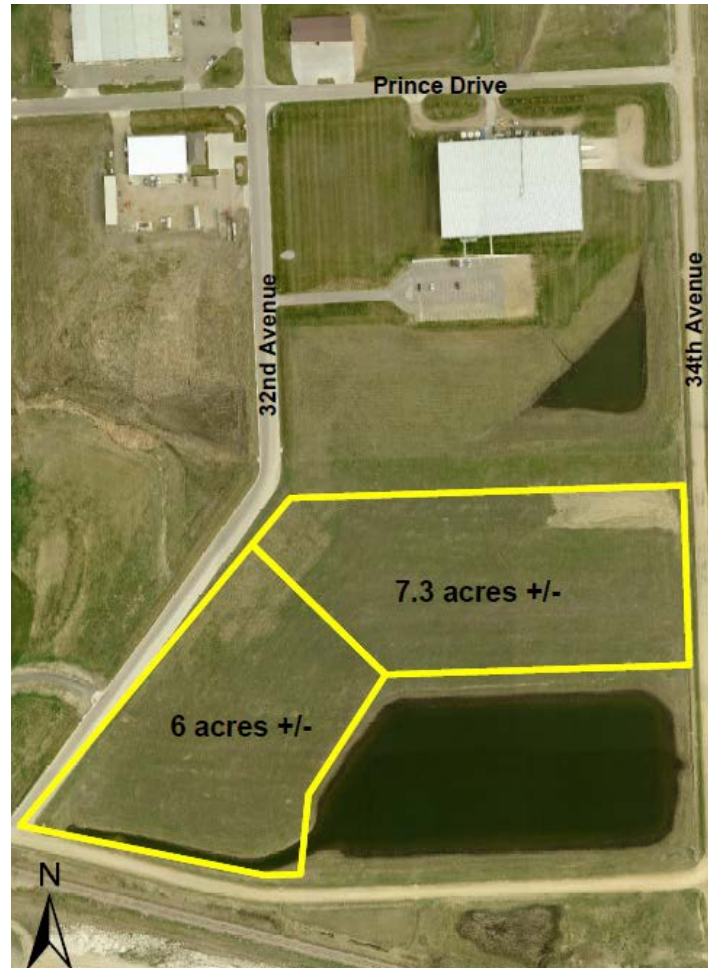


BRING YOUR DREAMS.



Telkamp Industrial Park



The Telkamp Industrial Park is a city-owned 262 acre industrial park located on the city's east side.

Available Land:

- Approximately 13.3 acres of shovel-ready land available.

Utilities:

- Water Main – 8"
- Sanitary Sewer Main – 10"
- Natural Gas Main – 2"
- Electricity – 115kv, 3 phase
- Telecommunications – fiber installed

BRING YOUR DREAMS.



Location:

- Located on 32nd Avenue, approximately ¼ mile east of the intersection of Interstate 29 and US Highway 14. South Dakota State University is within one mile. Adjacent facilities include: Falcon Plastics, Alltech, Clark Drew Construction, Counterpart, McKeever Vending, Sterling Technologies, and LG Everist.

Contact Info:

Mike Struck, Community Development Director
City of Brookings
311 3rd Avenue
Brookings, SD 57006
Phone: (605) 692-6629
Email: mstruck@cityofbrookings.org

